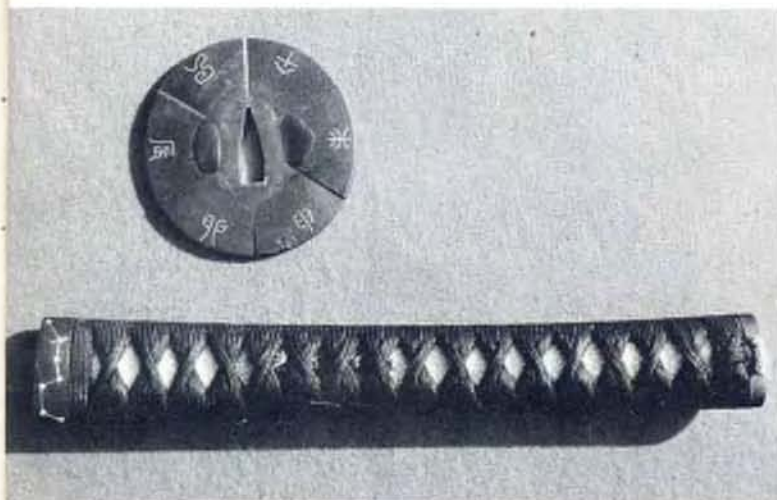




# sword furniture

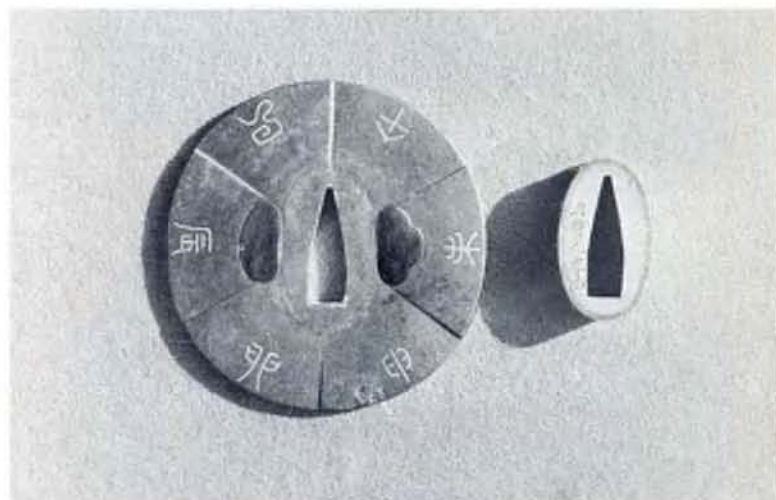
OTAKE RISUKE



1

MAKERS of sword mountings such as Sakai Mototaka who lived during the last period of the Tokugawa era (1600 - 1868) have left us with specimens of their craft. Aside from artistic skill which is evident in Sakai's work, the fittings such as I presently use on my sword, show their durability and strength by being today in usable condition.

I have fitted my *tsuka* with a *fuchi-kashira* combination, a matching set, made by Sakai. They are shown on the *tsuka* in Figure 1, alongside of a *tsuba* also made under his influence. The pattern for the *fuchi-kashira* is that of "seven stars" representing the *in*, or negative side of natural forces. A closeup of the detail of the *kashira* can be seen in Figure 2. In Figure 3 will be seen a closeup of the *tsuba* and the underside of the *fuchi* which shows the name of its maker engraved on that surface. The ideograms which appear on the *tsuba* are those which represent some of the animals of the Japanese zodiac; they represent *yo*, the positive principle of nature.



2 3

